



MATRIX
ARABIA



 sales@malksa.com

 www.malksa.com

ABOUT US



Matrix Arabia is an independent, engineering-led industrial solutions provider delivering critical products and commodities across the full supply chain—sourcing, technical validation, QA/QC, expediting, and last-mile logistics—to meet accelerating global demand with speed, control, and compliance.

We serve mission-critical sectors including municipalities, pipeline and EPC contractors, water & wastewater utilities, chemical and petrochemical plants, power generation, maritime, metals & mining, and the wider energy industry—where downtime is expensive and specifications are non-negotiable.

Operating 24×7 across the region, our in-house specialists support customers from RFQ to commissioning with deep domain expertise in industrial engineering, materials selection, and standards compliance. Backed by dedicated logistics hubs and disciplined expediting, we deliver on time, every time—without compromising traceability, documentation, or quality.

For technical enquiries and RFQs, contact: sales@malksa.com

OUR COMPANY VALUES



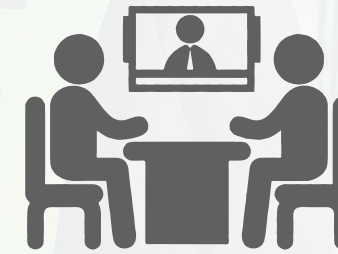
CUSTOMER FOCUS

Our customers are at everything we do. We strive to understand their needs and exceed their expectations through exceptional service and tailored solutions.



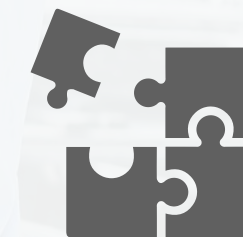
QUALITY

We are committed to providing high-quality products and services. We believe in doing things right the first time and continuously improving our standards.



SUSTAINABILITY

We are committed to eco-friendly practices, social responsibility and community contribution to ensure the better tomorrow.



RELIABILITY

We are dependable and consistent in our actions. Our clients and partners can count on us to deliver on our promises.

OUR MANIFESTO

Our mission is to strengthen critical infrastructure and industrial operations through engineering-led solutions that perform in the real world—under pressure, at scale, and under strict compliance. We deliver integrated systems, products, and services that improve safety, extend asset life, and reduce lifecycle cost—built on disciplined execution, documented quality, and sustainable engineering practices.

OUR NORTH STAR

To set a new benchmark in industrial performance by engineering next-generation product and service ecosystems that combine advanced materials, precision manufacturing, digital enablement, and end-to-end supply chain excellence. We help customers achieve higher operational resilience, predictable uptime, and future-ready efficiency—through standards-driven engineering, traceability, and on-time delivery.



EXPERTISE AREAS

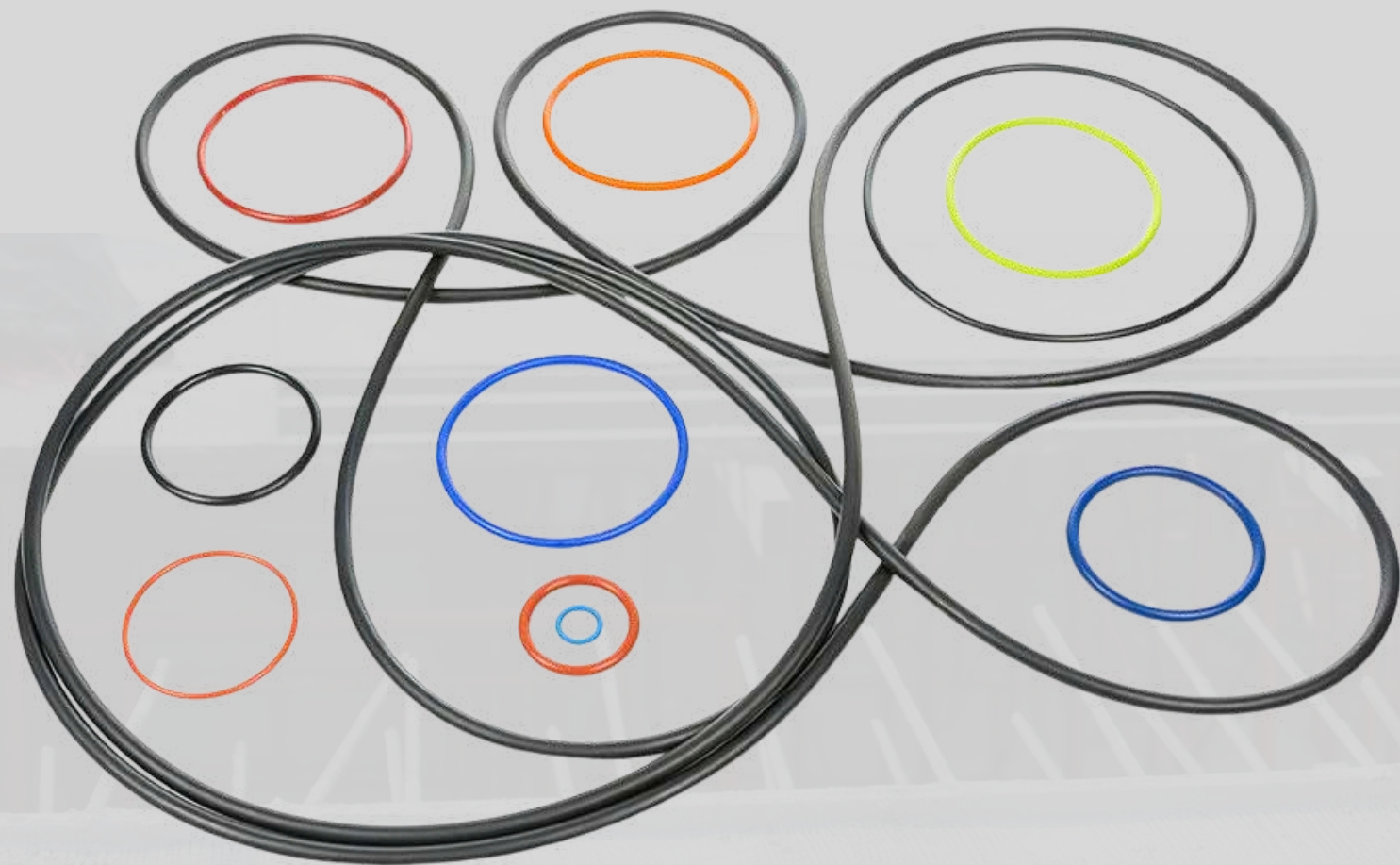
At **Matrix Arabia**, our expertise lies in delivering high-quality, engineered solutions tailored to the complex needs of global industries. With a strong presence across the Middle East and Africa, we specialize in the design, manufacturing, supply, and procurement of critical industrial components and systems.

- Engineering & Manufacturing
- Industrial Procurement & Supply Chain Management
- Industry-Specific Solutions
- Project-Centric Delivery

www.malksa.com



OUR PRODUCTS



PIPING & PIPELINE MATERIALS

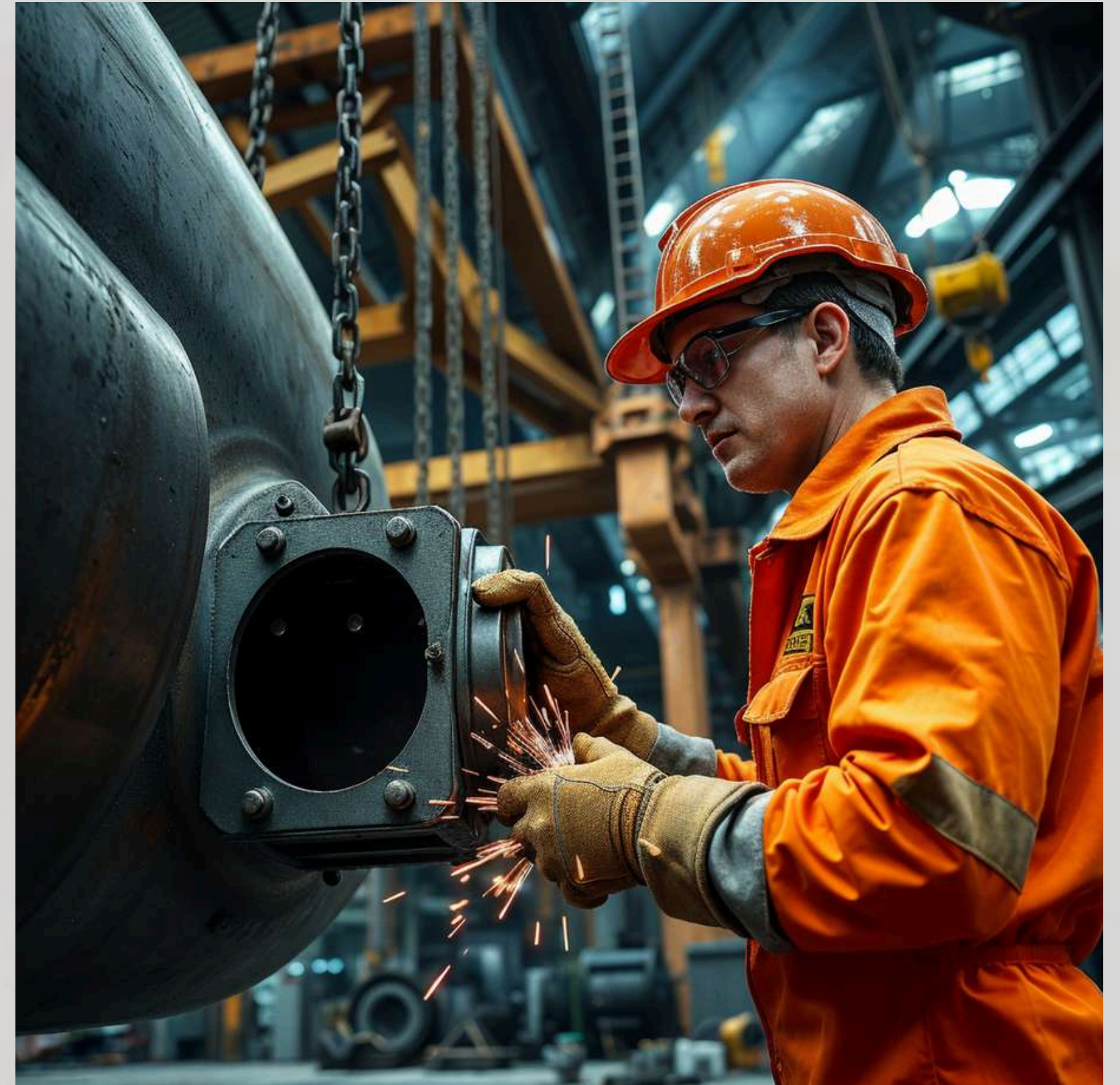
- Spring Supports
- Dismantling Joints
- Expansion Joints
- Valves – All Categories
- Gaskets, Bolts & Fasteners
- Wall Penetration Sleeves & Spacers
- Pipes, Flanges & Fittings
- Monolithic Isolation Joints
- PTFE tapes & Heat Shrink Sleeves
- Flange Guard / Splash Guard



MECHANICAL EQUIPMENTS

MATRIX
ARABIA

- Pumps
- Condensers
- Heat Exchangers
- Gearboxes
- Mixers & Agitators
- Turbines
- Generators
- Separators
- Compressors
- Pressure Vessels



GASKETS



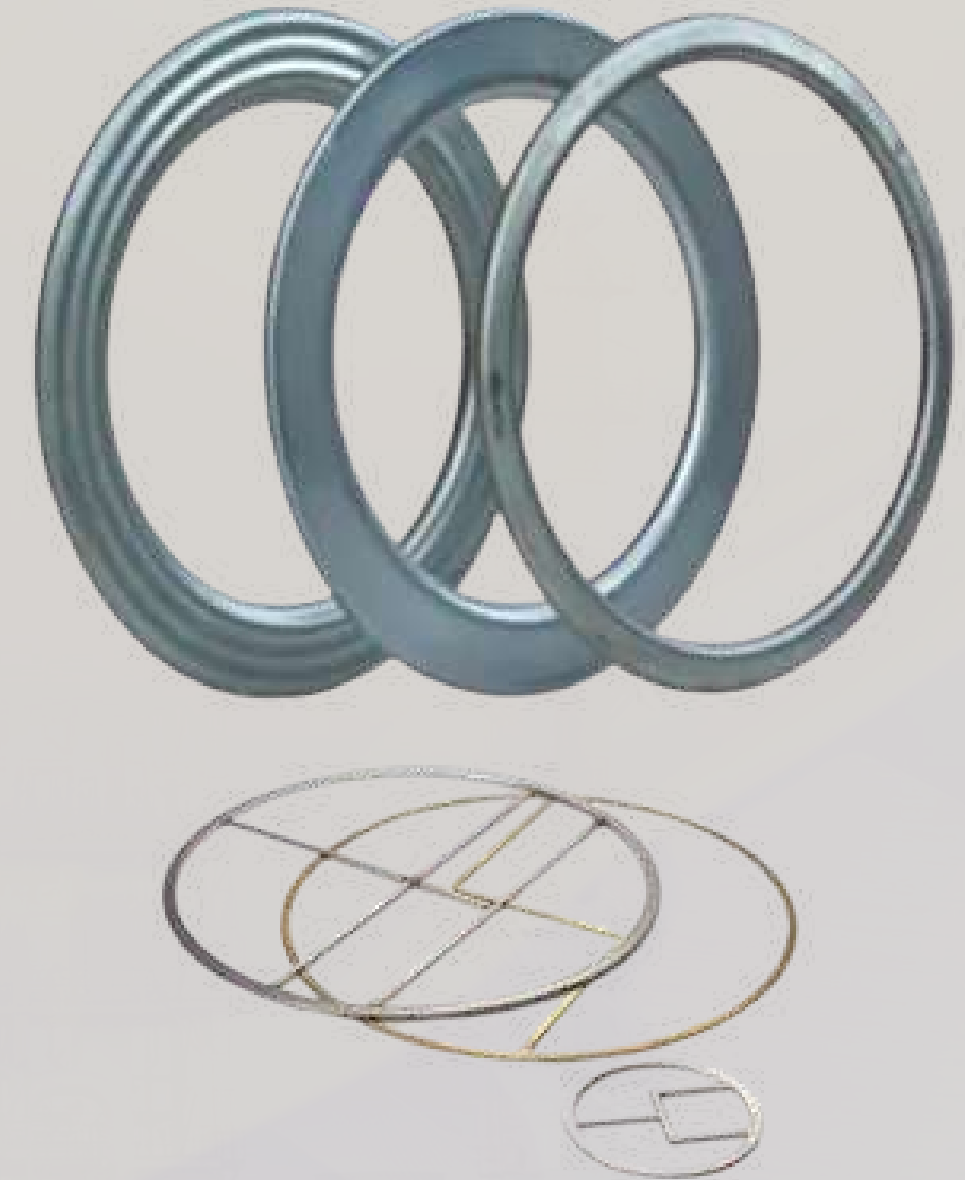
- **High-performance sealing systems** engineered for zero-leakage integrity, stable gasket stress, and long-cycle reliability in critical services.
- **Product Range:** Non-metallic | Semi-metallic | Metallic — Spiral Wound, Kammprofile, RTJ, Jacketed, PTFE Envelope, Compressed Fibre, Graphite sheet gaskets
- **Materials & Grades:** PTFE / ePTFE, Graphite, Elastomers (NBR / EPDM / FKM), SS304/316, Duplex, Inconel / special alloys (as per service & spec)
- **Operating Envelope:** Up to 250 bar | -200°C to +600°C (service-dependent)
- **Standards & Testing:** API 601, ASME B16.20, EN 13555 | leakage performance & compression behavior as required
- **Typical Applications:** Flange joints, heat exchangers, reactors, LNG & cryogenic lines, steam systems, hydrocarbon service, chemical duty



GASKETS



- Execution & Documentation (Matrix Advantage)
- Cut-to-size / CNC cutting, gasket kits, and flange kit solutions for projects & shutdowns
- Fast-track turnaround support with staged deliveries and expediting
- QA/QC Documentation Pack: MTC / CoC, ITP, MDR, dimensional reports, and batch traceability (as required)
- Engineering support: gasket selection by service conditions (pressure/temp/medium), flange facing, and bolt-load guidance



FASTNERS

- Critical bolting solutions engineered for joint integrity, controlled preload, and long-term reliability in high-vibration and high-temperature services.
- Product Range: Stud bolts, hex bolts, cap screws, nuts, washers, anchor bolts, U-bolts, threaded rods + complete flange bolting kits
- Materials & Grades: Carbon steel & alloy steel (Grade 8.8 / 10.9 / 12.9), ASTM A193 B7 / B16, A320 L7 (low-temp), A194 2H / 7 / 8 nuts; Stainless & duplex options (SS316, Duplex) as required
- Protection & Coatings: Hot-dip galvanizing, PTFE/Xylan, Dacromet/Geomet, zinc plating—selected based on corrosion class and service environment
- Standards & Compliance: ASTM / ASME / ISO bolting compliance with full traceability MTC / CoC; dimensional & thread verification on request
- Applications: Pressure piping flanges, heat exchangers, rotating equipment skids, structural connections, pipeline accessories, marine and outdoor installations

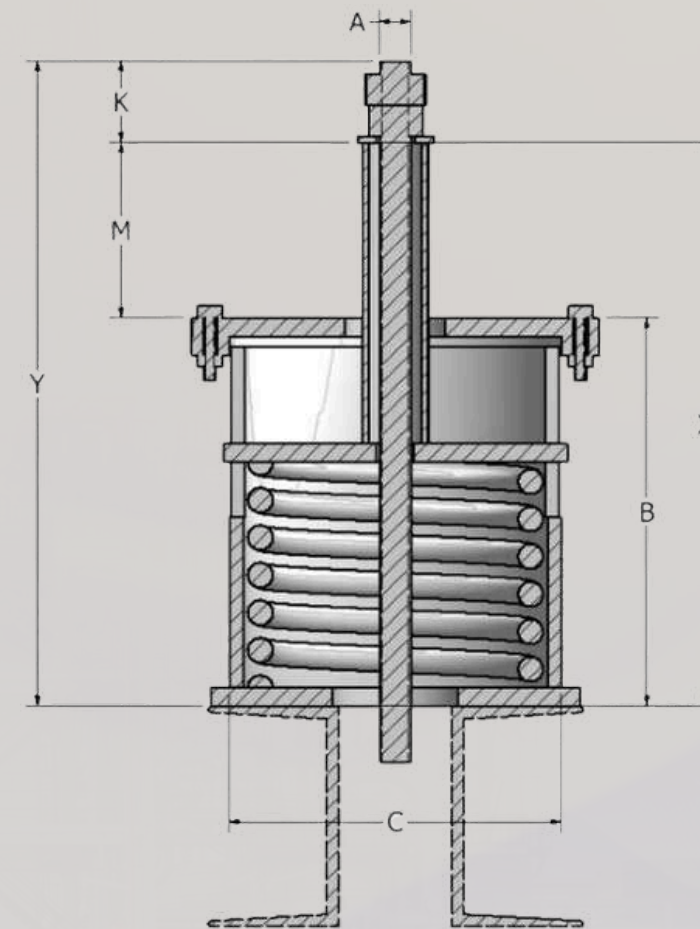
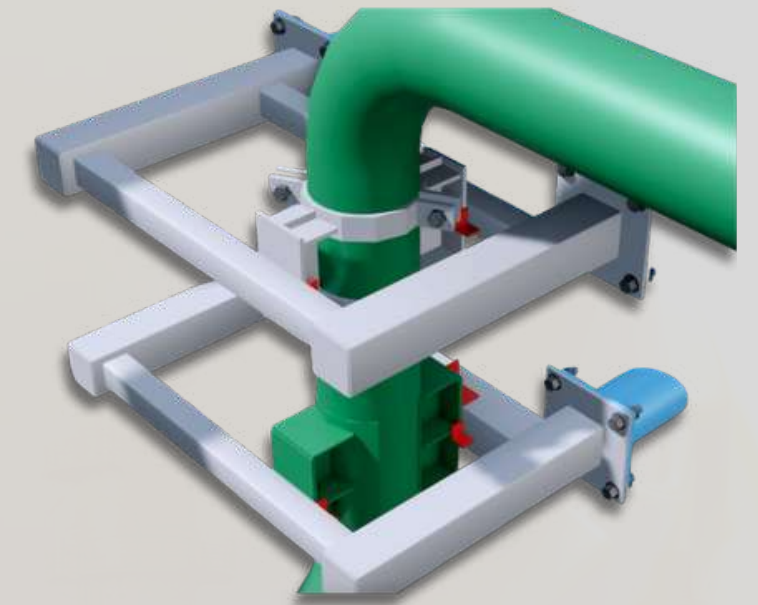
MATRIX
ARABIA



SPRING SUPPORT

MATRIX
ARABIA

- Engineered pipe-support solutions designed to absorb vertical and axial movement driven by thermal expansion, vibration, and dynamic loads—protecting critical piping and connected equipment.
- **Types:** Variable Spring Supports (load changes with travel) and Constant Spring Hangers/Supports (near-constant load through full travel range).
- **Performance Benefit:** Maintains controlled support reaction to minimize nozzle loads, reduce pipe stress, and prevent fatigue at anchors, guides, and welded joints.
- **Construction:** High-strength alloy steel body with corrosion-resistant surface protection; precision-machined components for stable guidance and repeatable movement.
- **Spring Technology:** Calibrated coil springs for accurate load compensation and consistent deflection characteristics across operating conditions.
- **Applications:** High-temperature piping, pipe racks, boilers/steam systems, petrochemical and process plants, power generation, and heavy-duty industrial services.

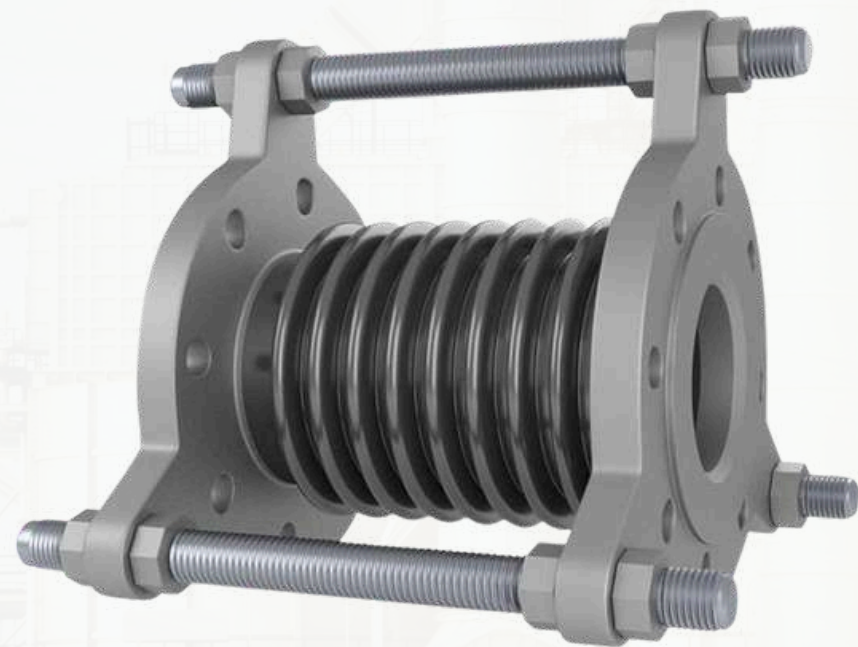


EXPANSION JOINTS

MATRIX
ARABIA

Product Range

- Metallic Expansion Joints (bellows type)
- Rubber Expansion Joints
- Fabric Expansion Joints (ducting / gas paths)
- Dismantling Joints
- Monolithic Isolation Joints
- Hinged Expansion Joints



EXPANSION JOINTS

Expansion joints are engineered flexibility components designed to absorb thermal growth, vibration, and installation misalignment—while protecting piping, equipment nozzles, and structural supports from excessive stresses. Matrix Arabia supplies expansion joint solutions that enhance system reliability, reduce fatigue-related failures, and extend service life across demanding industrial environments.

- **Core Function:** Compensate axial / lateral / angular movement and isolate vibration to stabilize the piping system
- **Materials & Build Options:** Metallic bellows, elastomer, and fabric constructions—selected by temperature, pressure, media, and movement requirements
- **Performance Benefits:** Reduced nozzle loads, lower pipe stress, improved seal integrity, and minimized maintenance interventions
- **Applications:** Hot lines, pump/compressor connections, heat exchangers, ducting, utility headers, marine systems, and process plant piping

MATRIX
ARABIA

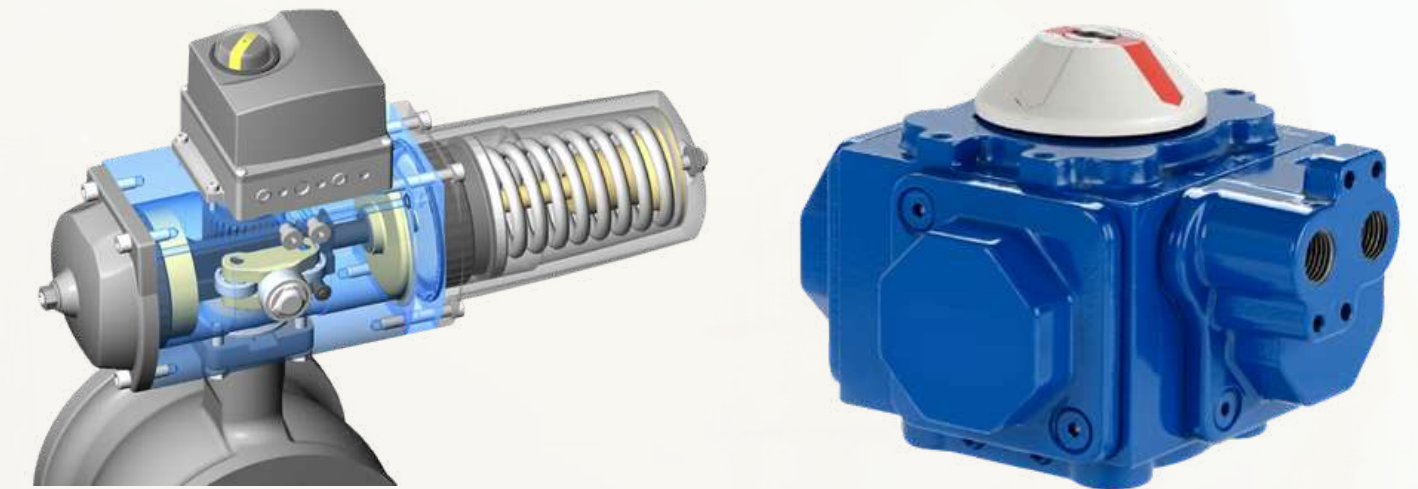


VALVES & ACTUATORS



- Designed for precise flow control, isolation, and regulation in process and utility pipelines
- Available in a wide range of types including gate, globe, ball, check, butterfly, and plug valves
- Constructed from carbon steel, stainless steel, and alloy materials to withstand high pressure and temperature conditions
- Actuators offered in pneumatic, electric, and hydraulic configurations for automated and remote operation

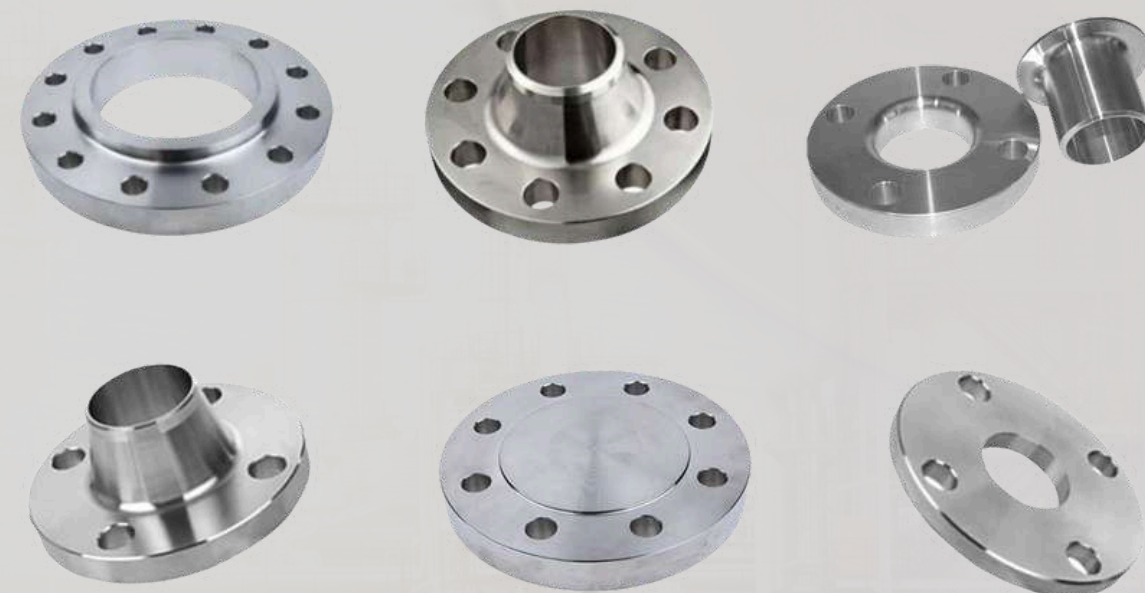
Our COMPACT and POWER COMPACT actuators are successfully used to supply control packages in diverse industries and applications that are superior in overall smaller size, with less weight, less compressed-air consumption, much more reliable, especially in high cyclic applications, and with very short acting times.



PIPE, FLANGES & FITTINGS

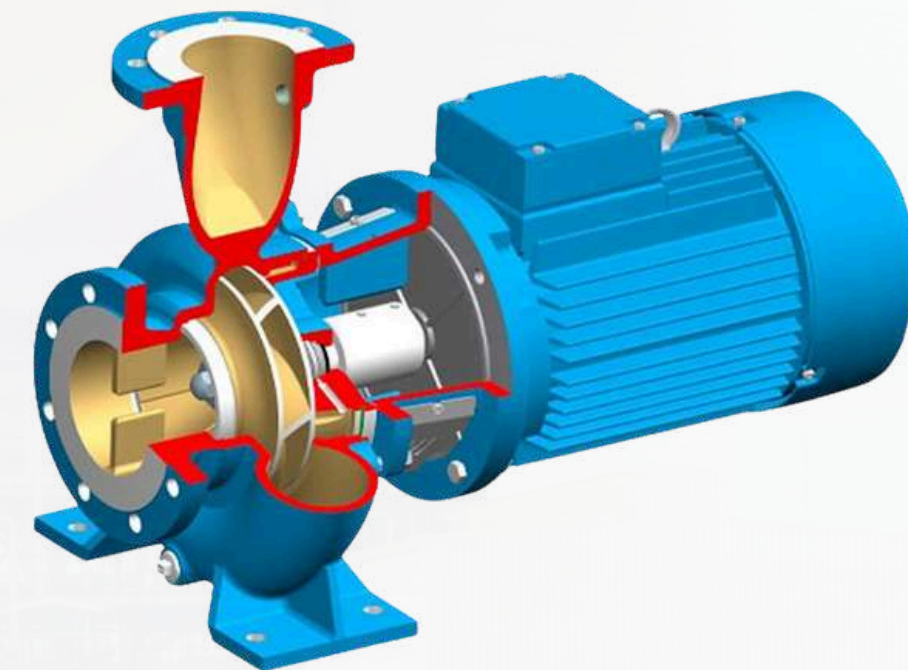
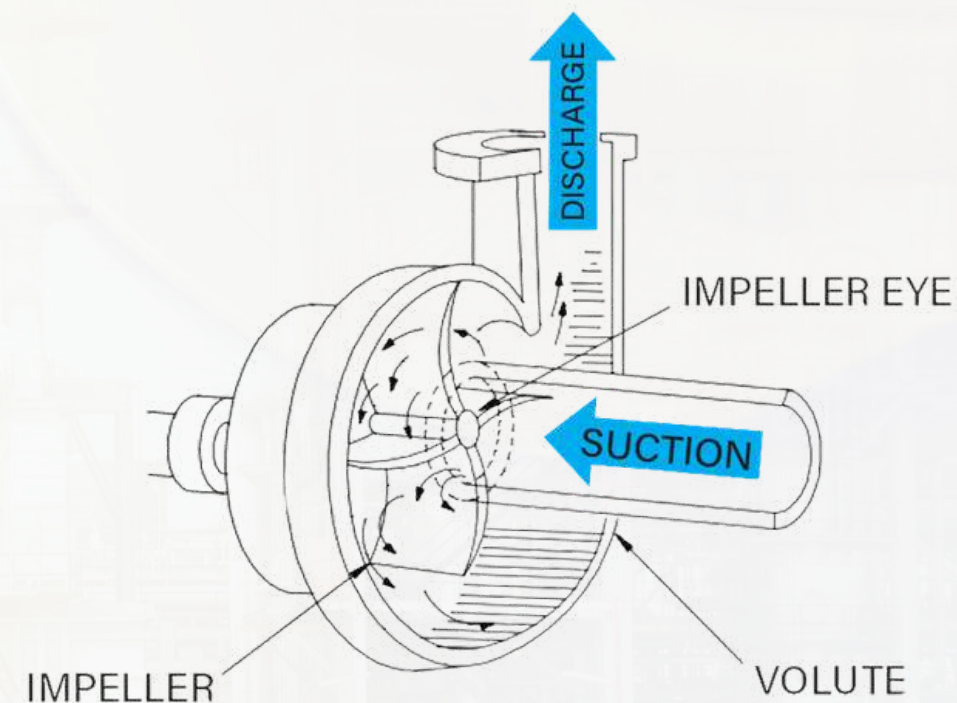
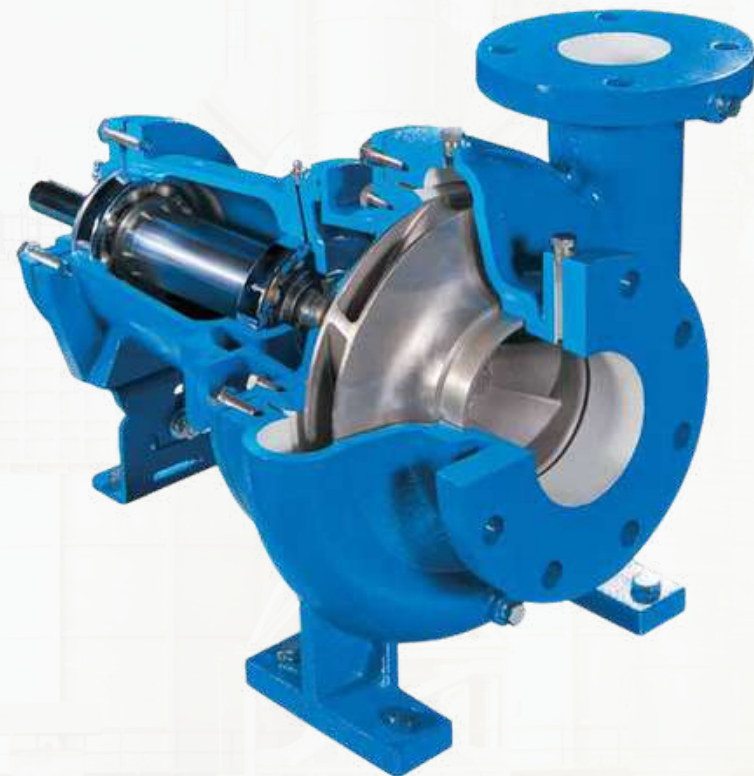
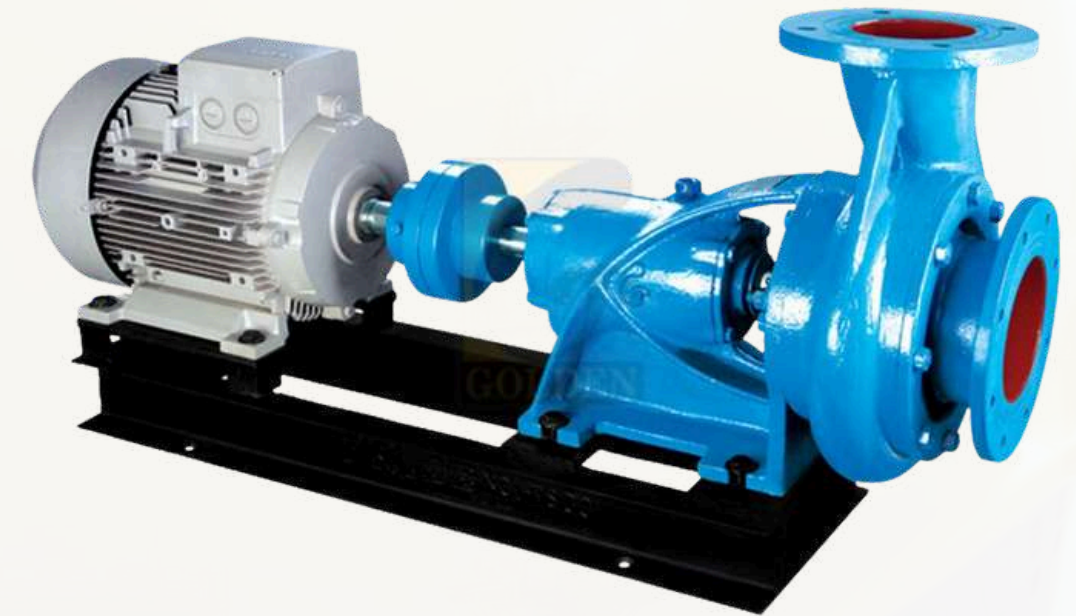
MATRIX
ARABIA

- Manufactured from carbon steel, stainless steel, and alloy materials to meet diverse pressure and temperature requirements
- Available in a wide range of sizes, pressure ratings (ANSI/ASME classes), and end configurations
- Flanges offered in weld neck, slip-on, socket weld, blind, lap joint, and threaded types for versatile installations
- Pipe fittings include elbows, tees, reducers, couplings, and caps ensuring smooth directional and dimensional transitions
- Compliant with international standards such as ASME B16.5, B16.9, and ASTM specifications for consistent quality



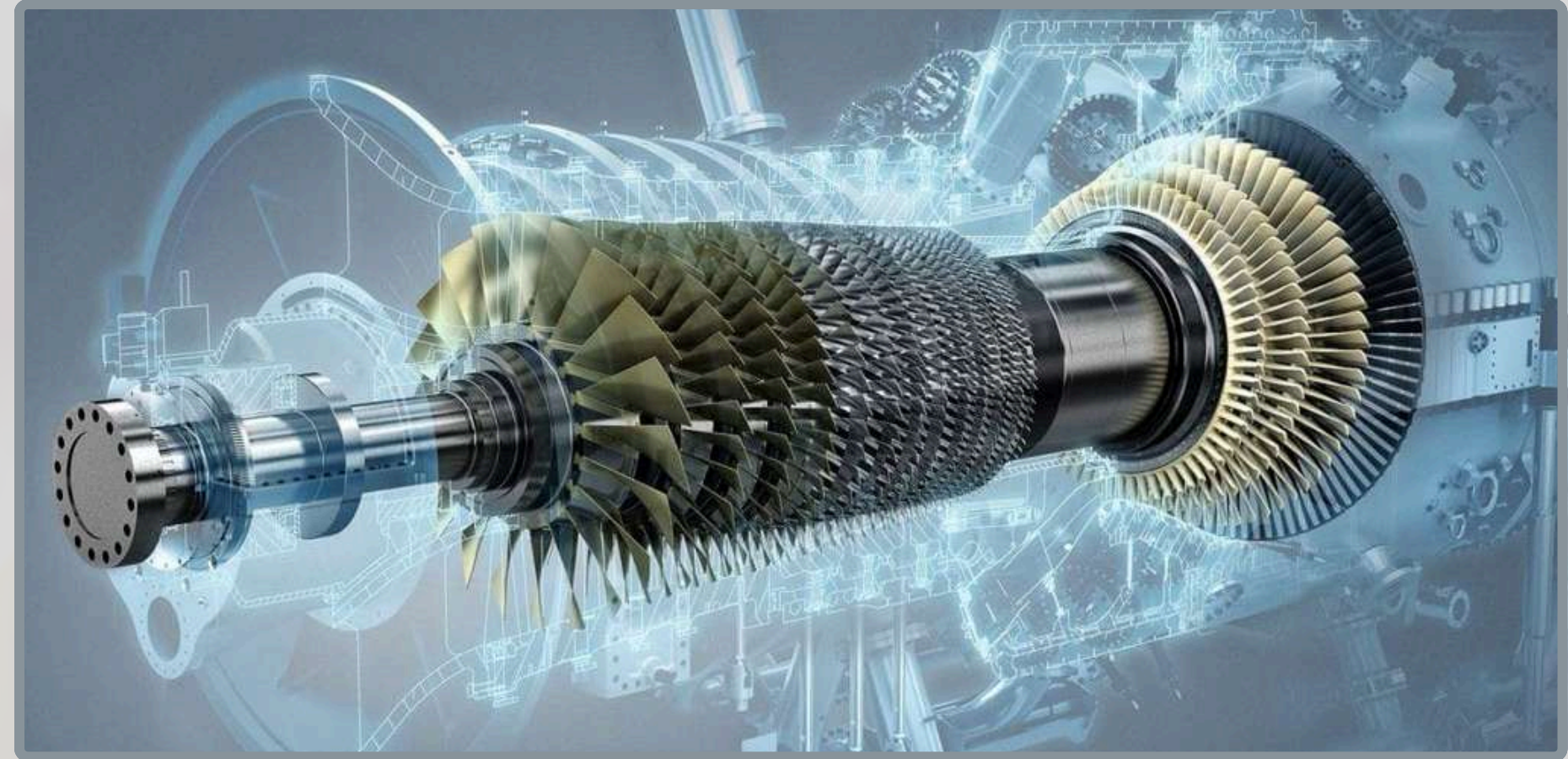
PUMPS

- Designed for efficient transfer of liquids across various industrial and process applications
- Available in multiple types including centrifugal, positive displacement, diaphragm, and gear pumps
- Built with high-performance materials such as cast iron, stainless steel, and special alloys for durability and corrosion resistance
- Engineered for optimum hydraulic efficiency, low vibration, and minimal maintenance
- Compatible with mechanical seals, gland packing, and variable speed drives for enhanced operational flexibility.

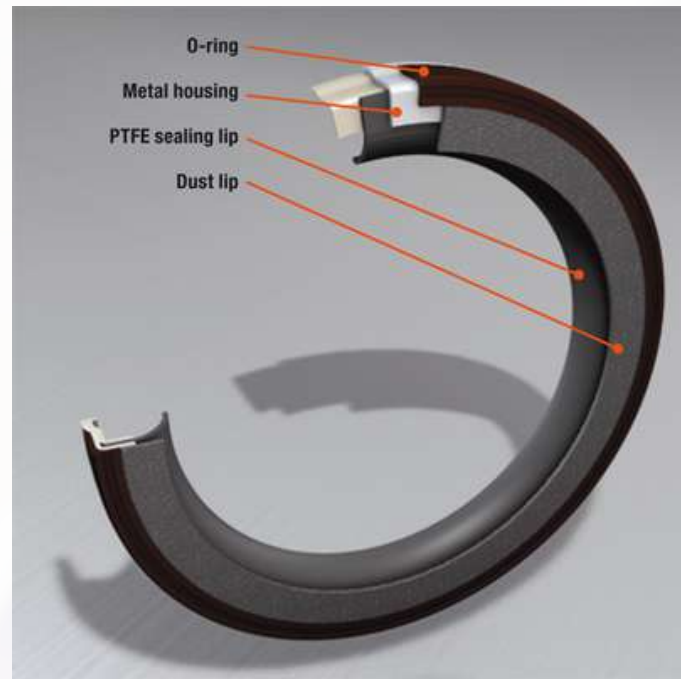


STEAM TURBINES

- High-efficiency impulse/reaction turbine for power generation and mechanical drive applications
 - Available in condensing, back-pressure, or extraction configurations
 - Handles steam conditions up to 140 bar(g) and 540°C
-
- Compact, robust design with horizontally split casing for easy maintenance
 - Precision-engineered blading for maximum efficiency and reduced steam losses
 - Digital electro-hydraulic governor for accurate speed and load control
 - Fitted with hydrodynamic bearings and labyrinth seals for smooth, leak-free operation



PTFE SEALS & O-RINGS

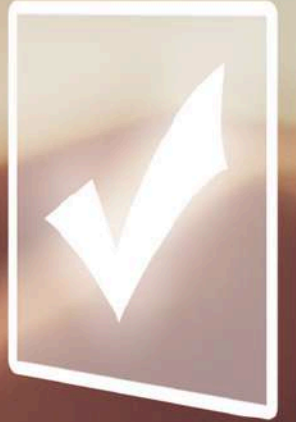


- Made from Polytetrafluoroethylene (PTFE) for exceptional chemical and temperature resistance.
- Chemically inert to most acids, solvents, and aggressive media.
- Features a low friction coefficient, reducing wear and ensuring smooth dynamic sealing.
- Can withstand high pressures, typically up to 250 bar with proper support.
- Available in FDA-approved and food-grade formulations for hygienic use.

- We supply miniature O-rings, large diameter O-rings, continuously moulded and spliced and vulcanised O-rings and can cost effectively supply low volume and high volume requirements from a range of manufacturing processes.
- We offer a range of PFA and FEP encapsulated O-rings for more demanding applications such as those with high end operational temperature conditions and requiring chemical resistance



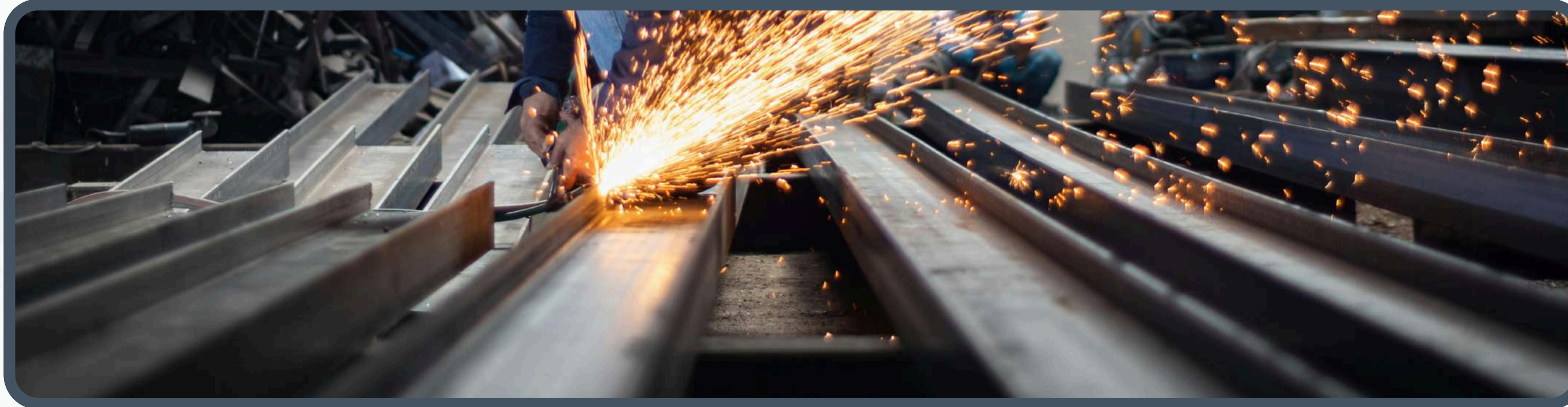
OUR SERVICES



www.malksa.com

STEEL FABRICATION

MATRIX
ARABIA



Structural & Industrial Steel Fabrication Expertise

Expertise in structural and industrial steel fabrication, including beams, platforms, pressure vessels, and process skids, engineered to meet site-specific load and stress requirements.

Advanced Manufacturing Technologies

Utilizes CNC plasma/laser cutting, MIG/TIG automated welding, and precision rolling and bending to achieve tight tolerances and superior dimensional accuracy.

Engineering Design & Optimization

Employs finite element analysis (FEA) and 3D modeling (AutoCAD, Tekla) during design and fabrication to optimize material strength, reduce weight, and enhance structural integrity.

ENERGY SAVING SOLUTIONS

MATRIX
ARABIA

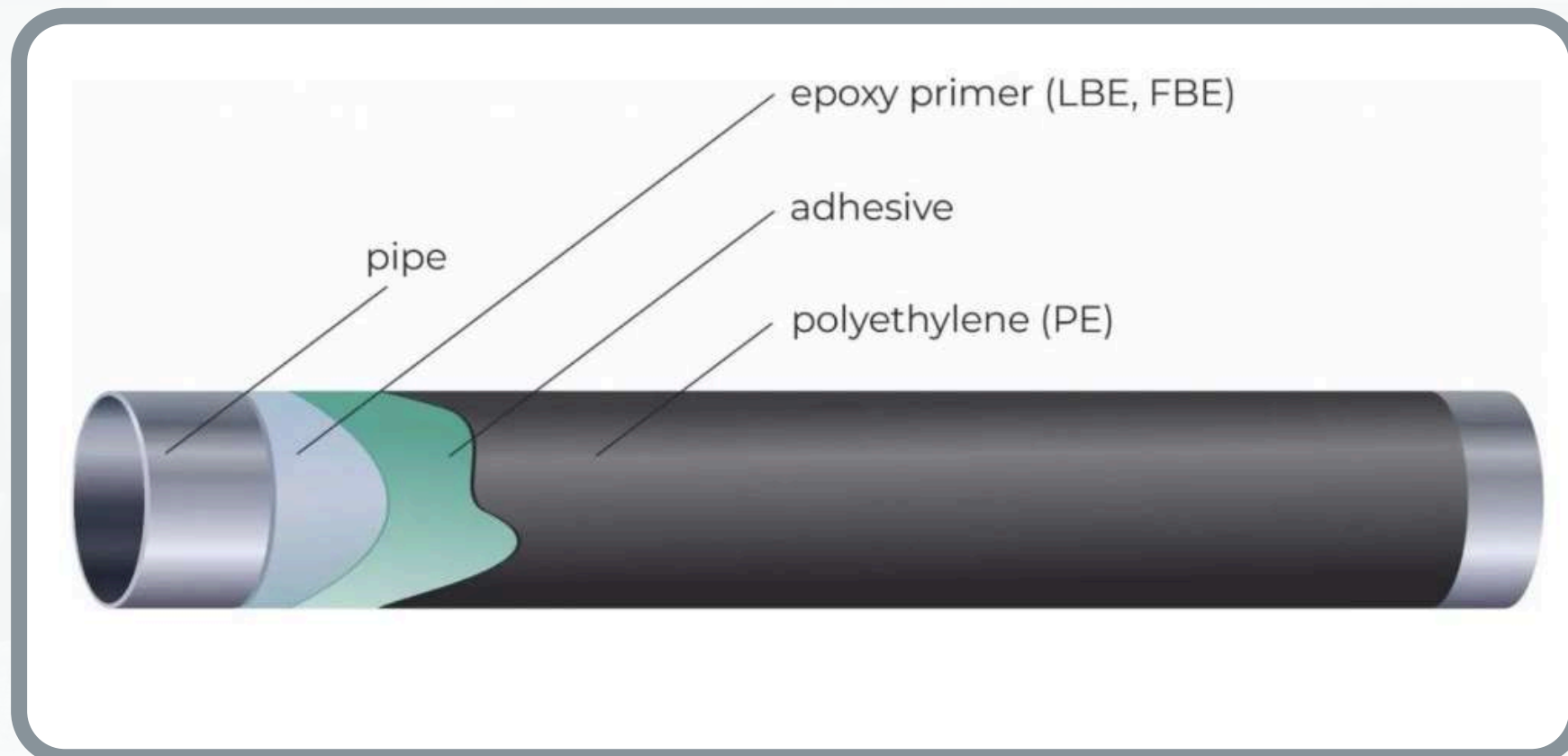


- Targeted interventions based on data-driven simulation (including AI/neural-network algorithms) to optimise motor efficiency, transformer performance and cable thermal losses—drawing on similar techniques applied in heavy-consumption installations.
- Guaranteed electric-energy savings in the order of 7% to 13% for industrial installations, with comparable benefits available for commercial buildings and large utilities.
- Enhanced reliability of the electrical system: by reducing harmonic currents, stabilising voltage, decongesting transformers and distribution boards, the installation is better prepared for future expansion and less prone to unscheduled downtime.
- A holistic implementation strategy that covers both retrofit of existing installations and design of new electrical systems with energy-saving built in from day one (thus reducing both operating costs and capital cost of construction).

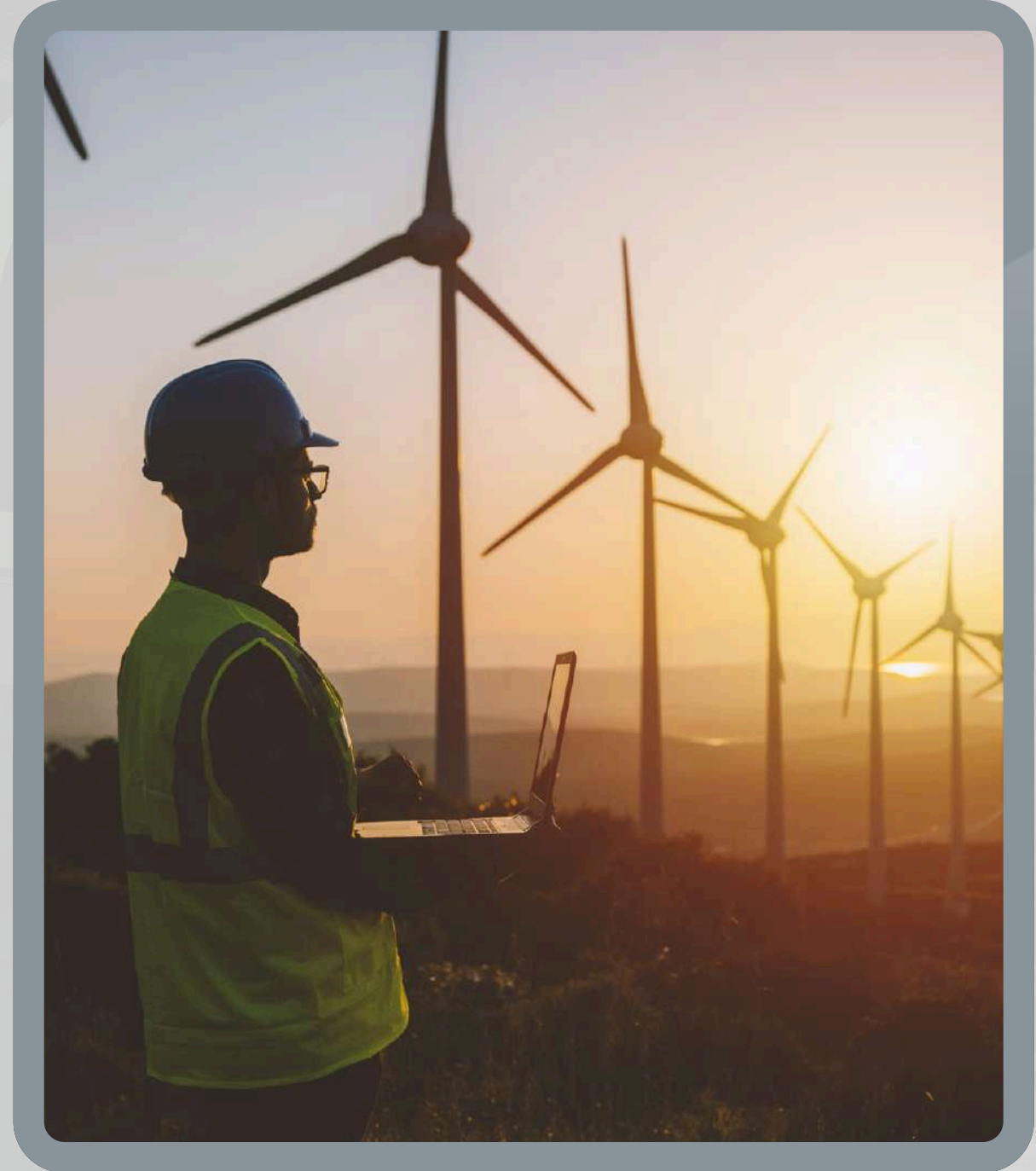
COATING FOR PIPELINE

MATRIX
ARABIA

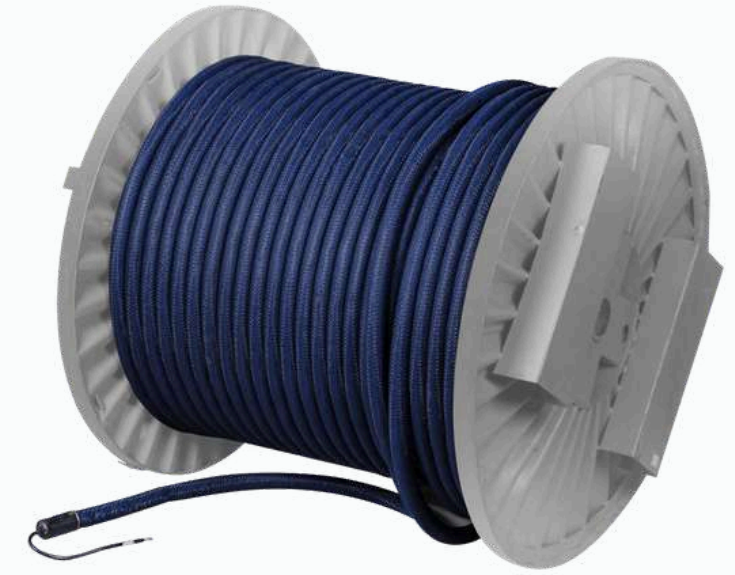
- Provides protective coating solutions for onshore and offshore pipelines to prevent corrosion, abrasion, and chemical degradation under harsh environmental conditions.
- Utilizes advanced systems such as Fusion Bonded Epoxy (FBE), 3-Layer Polyethylene/Polypropylene (3LPE/3LPP), and Polyurethane coatings for long-term durability and adhesion.
- Applies internal and external coatings using automated blasting, pre-heating, and electrostatic spray technologies to ensure uniform film thickness and surface coverage



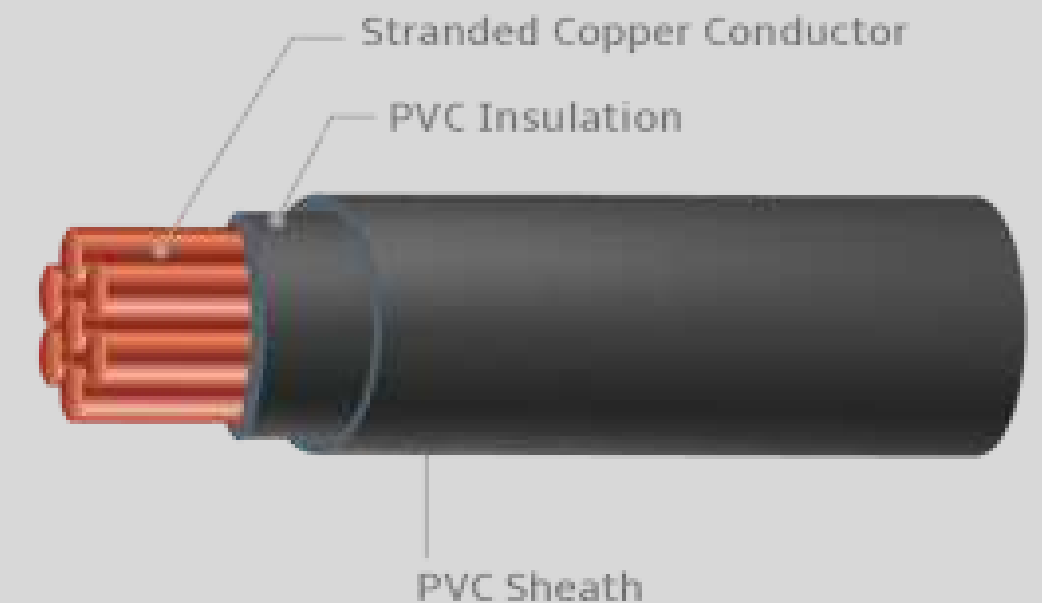
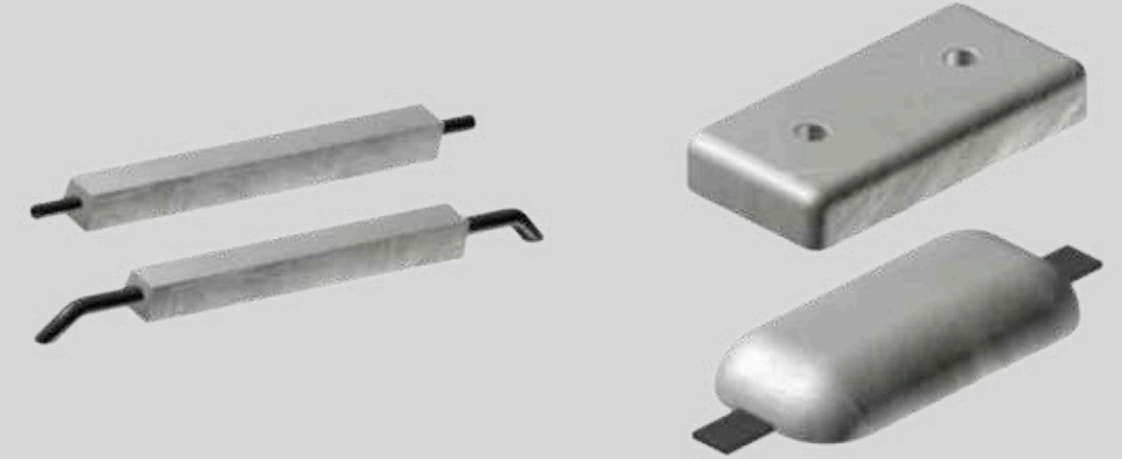
- **ON-SITE SPRING SUPPORT CALIBRATION**
- **ENERGY MANAGEMENT AUDITS**
- **EXPANSION JOINT REFURBISHMENT**



- BAGGED COPPER / COPPER SULPHATE REFERENCE ELECTRODE
- AIR/OIL COOLED TRANSFORMER RECTIFIERS
- CANISTER HIGH SILICON CAST IRON ANODES
- CATHODIC PROTECTION TEST STATION
- CORROSION TEST COUPON
- EXPLOSION-PROOF JUNCTION BOXES
- HEAT-SHRINKABLE TUBING
- HIGH MOLECULAR WEIGHT POLYETHENE (HMWPE) INSULATED CABLE
- ISOLATING SPARK GAP
- MMO TUBULAR ANODES



- POLYMER FLEXIBLE ANODES
- PORTABLE COPPER / COPPER SULFATE REFERENCE ELECTRODE
- PREPACKAGED MAGNESIUM ANODES
- PRE-PACKAGED ZINC ANODE
- PVDF/HMWPE DUAL-INSULATED POWER CABLE
- RESIN FILLED CABLE JOINT SPLICE KIT
- STAND-OFF ALUMINUM SLENDER ANODES
- STEEL ENCLOSURE JUNCTION BOX
- XLPE/PVC DUAL-INSULATED POWER CABLE





SUSTAINIBILITY

As a proud participant in the UN Global Compact, we aligned our operations with global principles on human rights, labour, the environment, and anti-corruption.

Focused on net-zero efficiency and responsible resource use, Truso delivers infrastructure that supports the world's clean-energy transition—from aluminium and lithium for renewables and e-mobility to projects in waste and water management.

MATRIX
ARABIA

MATRIX **ARABIA**

"INNOVATIVE ENGINEERING FOR A CHANGING WORLD"

Matrix Arabia Limited, Dammam, KSA



www.malksa.com



+966 54 083 3710



sales@malksa.com